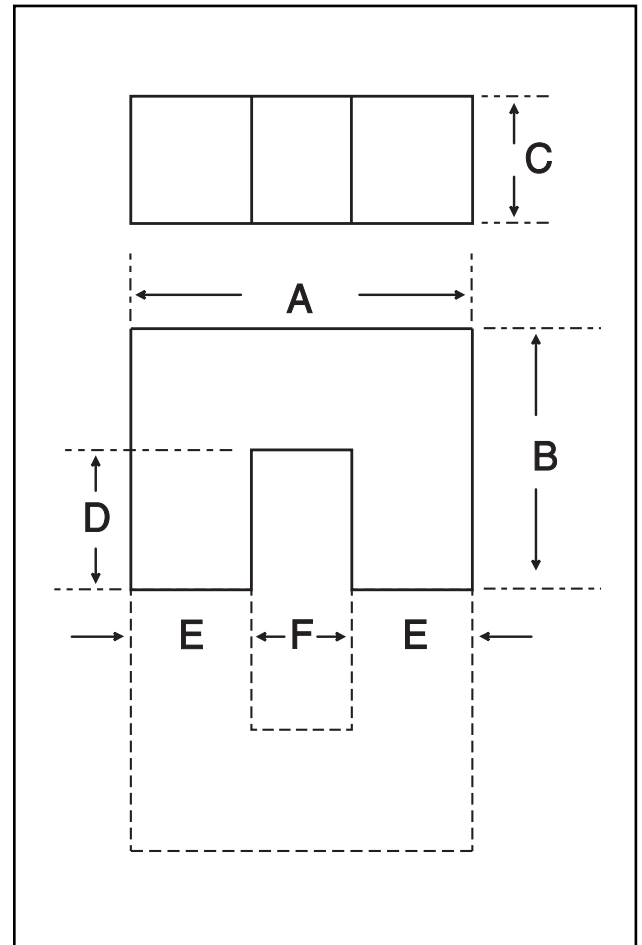


Dimensions

Symbol	Value (mm)
'A'	91.20-94.80
'B'	75.50-76.50
'C'	24.40-30.60
'D'	47.10-48.90
'E'	27.50-28.50
'F'	34.60 min



Effective Geometric Parameters

Parameter	Symbol	Value	Unit
$\Sigma(l/A)$	$C_1$	0.42	$\text{mm}^{-1}$
effective magnetic path length	$l_e$	354.00	mm
effective area of magnetic path	$A_e$	840.00	$\text{mm}^2$
minimum area of magnetic path	$A_{\text{min}}$	-	$\text{mm}^2$
effective volume	$V_e$	297000	$\text{mm}^3$

Electrical Specification

Grade	$A_L$ Value	Tolerance on $A_L$ (%)	Gap Length (mm)	Eff. Permeability	Part No.
F48	5700	+30/-20	-	$\approx 1900$	34-050-48

