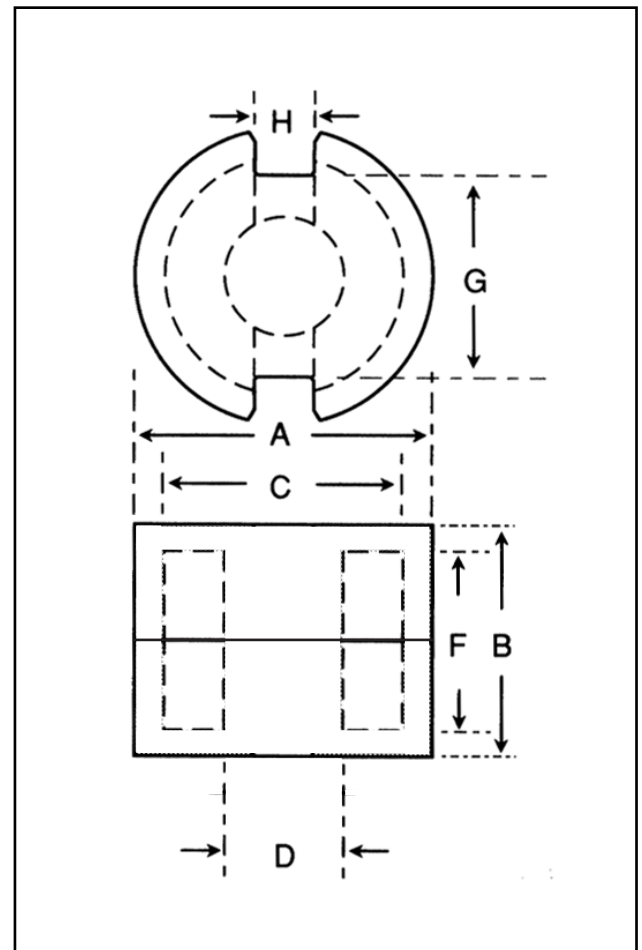


Dimensions

Symbol	Value (mm)
'A'	7.10-7.35
'B'	4.10-4.20
'C'	5.80-6.00
'D'	2.90-3.00
'F'	2.80-3.00
'G'	5.05-5.45
'H'	1.70-1.90

Effective Geometric Parameters

Parameter	Symbol	Value	Unit
$\Sigma(l/A)$	C_1	1.43	mm^{-1}
effective magnetic path length	l_e	10.00	mm
effective area of magnetic path	A_e	7.00	mm^2
effective volume	V_e	70	mm^3

Electrical Specification

Grade	A_L	Tolerance on A_L (%)	Gap Length (mm)	Eff. Permeability	Part No.
F16	25	± 10	0.33	≈ 28	29-291-32*

*Part number refers to a pair of cores