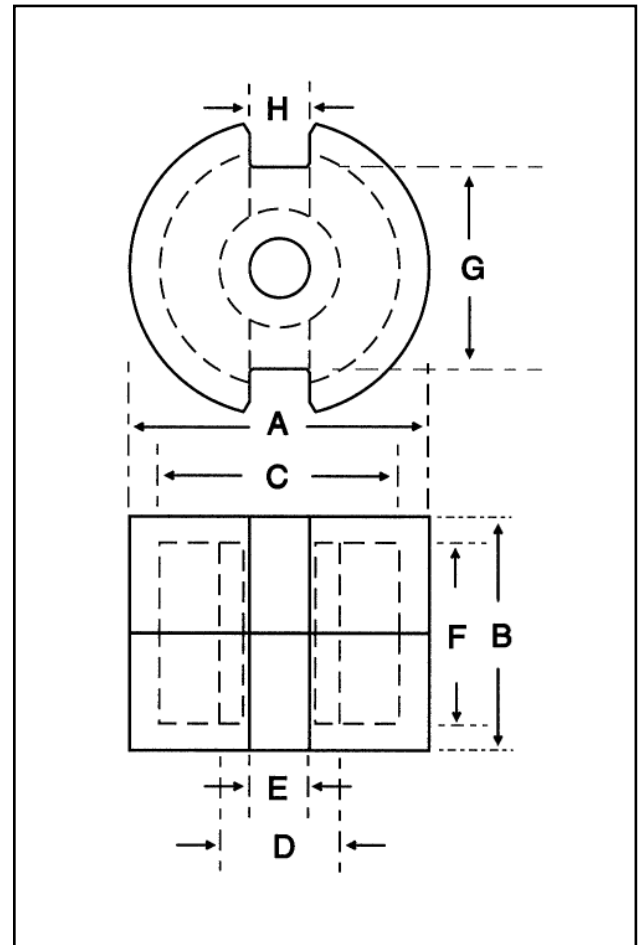


Dimensions

Symbol	Value (mm)
'A'	35.00-36.00
'B'	21.40-22.00
'C'	29.90-30.70
'D'	15.80-16.20
'E'	5.40-5.70
'F'	14.60-15.00
'G'	25.00-26.00
'H'	4.30-4.70



Effective Geometric Parameters

Parameter	Symbol	Value	Unit
$\Sigma(l/A)$	C_1	0.26	mm ⁻¹
effective magnetic path length	l_e	53.00	mm
effective area of magnetic path	A_e	202.00	mm ²
effective volume	V_e	10700	mm ³

Electrical Specification

Grade	A_L	Tolerance on A_L (%)	Gap Length (mm)	Eff. Permeability	Part No.
F44	400	±5	0.67	≈83	29-6538-44*
F44	7300	+30/-20	-	≈1510	29-6500-44
P10	6697	min	-	1386 min	29-6500-40
P11	8400	+30/-20	-	≈1738	29-6500-41

*Part number refers to a pair of cores

