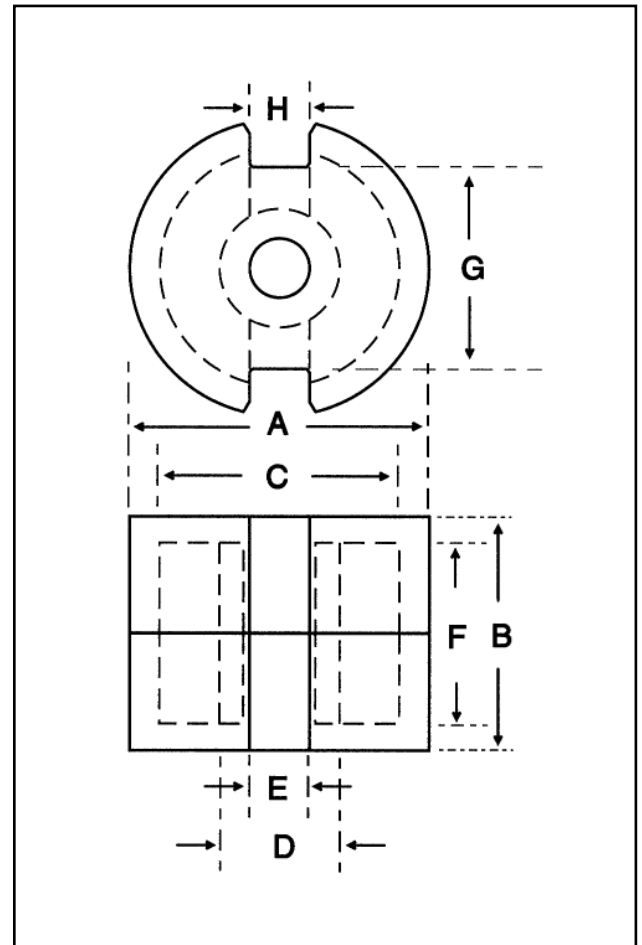


Dimensions

Symbol	Value (mm)
'A'	29.50-30.50
'B'	18.60-19.00
'C'	25.00-25.80
'D'	13.10-13.50
'E'	5.40-5.60
'F'	13.00-13.40
'G'	20.00-20.90
'H'	4.70-5.30

Effective Geometric Parameters

Parameter	Symbol	Value	Unit
$\Sigma(l/A)$	C_1	0.33	mm ⁻¹
effective magnetic path length	l_e	45.00	mm
effective area of magnetic path	A_e	136.00	mm ²
effective volume	V_e	6120	mm ³

Electrical Specification

Grade	A_L	Tolerance on A_L (%)	Gap Length (mm)	Eff. Permeability	Part No.
P11	6300	+30/-20	-	≈1658	29-620-41
F5A	7500	+30/-20	-	≈1974	29-620-49
F9	10500	+30/-20	-	≈2764	29-620-36
F10	14500	+30/-20	-	≈3817	29-620-37