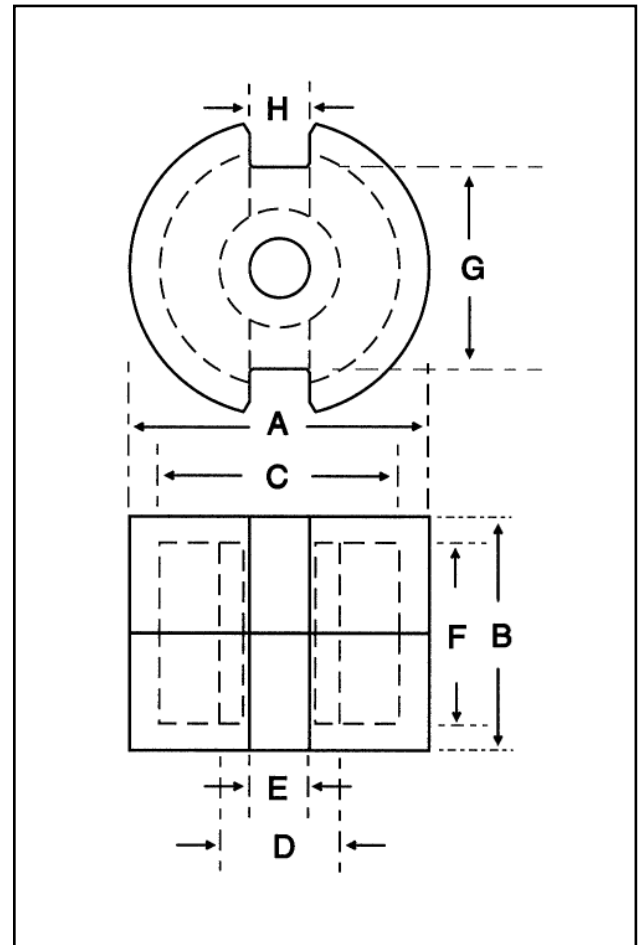


Dimensions

Symbol	Value (mm)
'A'	25.00-26.00
'B'	15.90-16.30
'C'	21.20-22.00
'D'	11.10-11.50
'E'	5.40-5.60
'F'	11.00-11.40
'G'	17.00-17.70
'H'	3.90-4.50



Effective Geometric Parameters

Parameter	Symbol	Value	Unit
$\Sigma(l/A)$	C_1	0.40	mm^{-1}
effective magnetic path length	l_e	37.50	mm
effective area of magnetic path	A_e	94.00	mm^2
effective volume	V_e	3520	mm^3

Electrical Specification

Grade	A_L	Tolerance on A_L (%)	Gap Length (mm)	Eff. Permeability	Part No.
F44	315	± 5	0.34	≈ 100	29-606-44*
F44	4650	+30/-20	-	≈ 1480	29-600-44
P11	5200	+30/-20	-	≈ 1655	29-600-41
F5A	6000	+30/-20	-	≈ 1910	29-600-49

*Part number refers to a pair of cores

