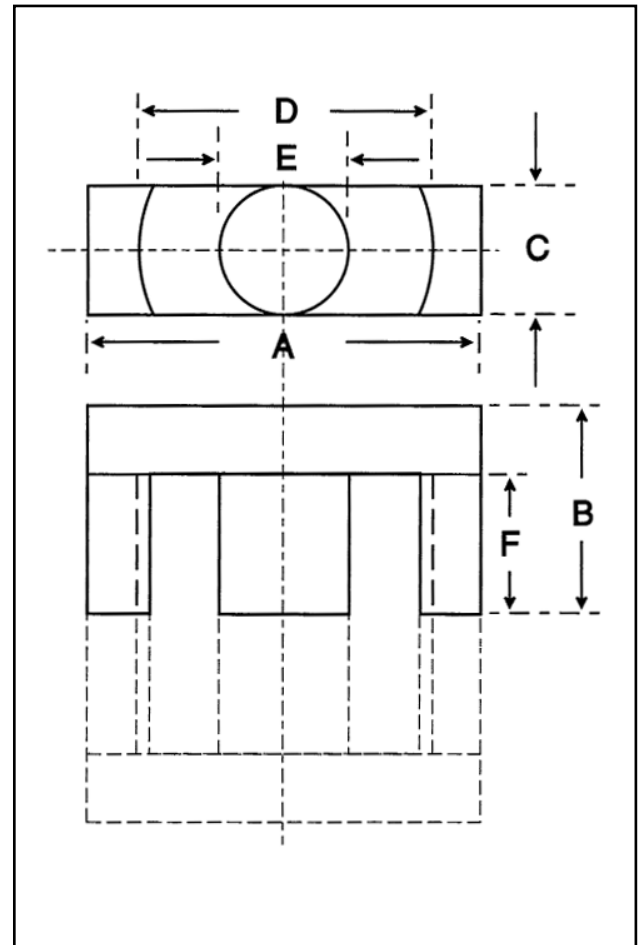


Dimensions

Symbol	Value (mm)
'A'	58.40-61.20
'B'	30.80-31.20
'C'	21.20-22.10
'D'	43.60-45.80
'E'	21.20-22.10
'F'	22.00-22.90



Effective Geometric Parameters

Parameter	Symbol	Value	Unit
$\Sigma(l/A)$	C_1	0.38	mm^{-1}
effective magnetic path length	l_e	139.00	mm
effective area of magnetic path	A_e	368.00	mm^2
minimum area of magnetic path	A_{\min}	368.00	mm^2
effective volume	V_e	51200	mm^3

Electrical Specification

Grade	A_L Value	Tolerance on A_L (%)	Gap Length (mm)	Eff. Permeability	Part No.
F44	≈160	-	2.8 ±0.05	48	32-494-44*
F44	4900	+30/-20	-	1482	32-490-44M**
F48	5800	+30/-20	-	1754	32-490-48M**

*Part number refers to half cores

**These cores come as matched pairs.

