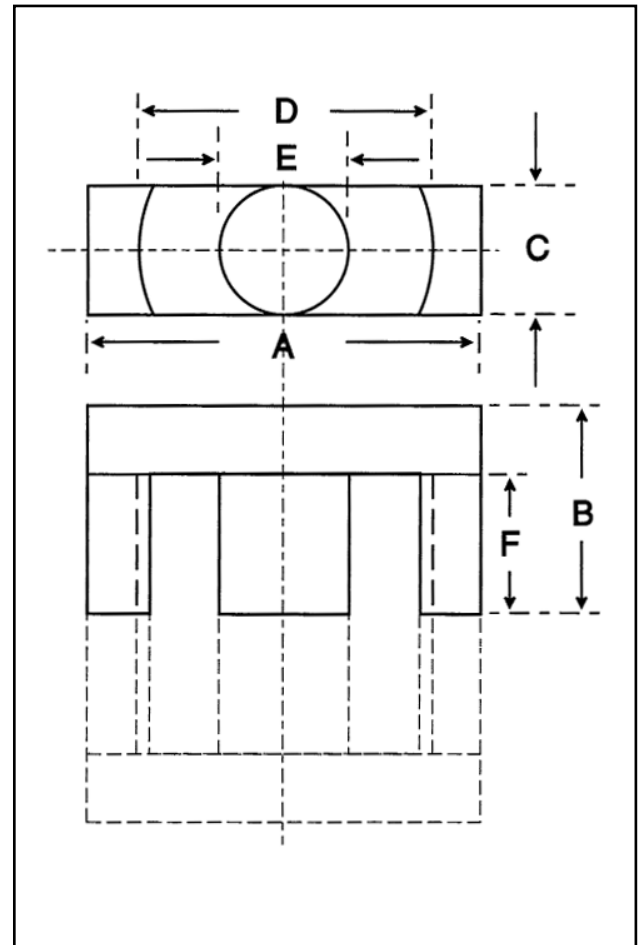


Dimensions

Symbol	Value (mm)
'A'	53.20-55.80
'B'	27.40-27.80
'C'	18.50-19.30
'D'	40.10-42.30
'E'	18.50-19.30
'F'	19.80-20.60

Effective Geometric Parameters

Parameter	Symbol	Value	Unit
$\Sigma(l/A)$	C_1	0.454	mm^{-1}
effective magnetic path length	l_e	127.00	mm
effective area of magnetic path	A_e	280.00	mm^2
minimum area of magnetic path	A_{\min}	280.00	mm^2
effective volume	V_e	35500	mm^3

Electrical Specification

Grade	A_L Value	Tolerance on A_L (%)	Gap Length (mm)	Eff. Permeability	Part No.
F48	4600	+30/-20	-	1662	32-590-48M*

*These cores come as matched pairs.