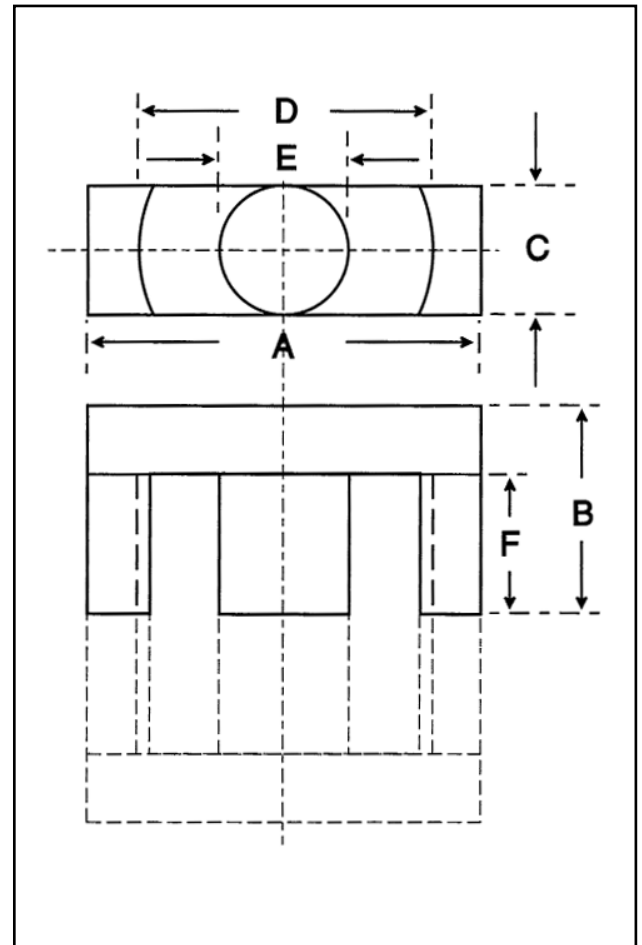


Dimensions

Symbol	Value (mm)
'A'	47.60-49.80
'B'	24.50-24.90
'C'	15.90-16.70
'D'	36.10-37.90
'E'	15.90-16.70
'F'	17.70 min



Effective Geometric Parameters

Parameter	Symbol	Value	Unit
$\Sigma(l/A)$	C_1	0.54	mm^{-1}
effective magnetic path length	l_e	114.00	mm
effective area of magnetic path	A_e	211.00	mm^2
minimum area of magnetic path	A_{min}	209.00	mm^2
effective volume	V_e	24000	mm^3

Electrical Specification

Grade	A_L Value	Tolerance on A_L (%)	Gap Length (mm)	Eff. Permeability	Part No.
F44	≈335	-	1.0 ±0.05	145	32-569-44
F44	≈570	-	0.5 ±0.03	245	32-568-44
F44	3525	+30/-20	-	1515	32-560-44
F48	4090	+30/-20	-	1810	32-560-48

Part numbers refer to half cores

