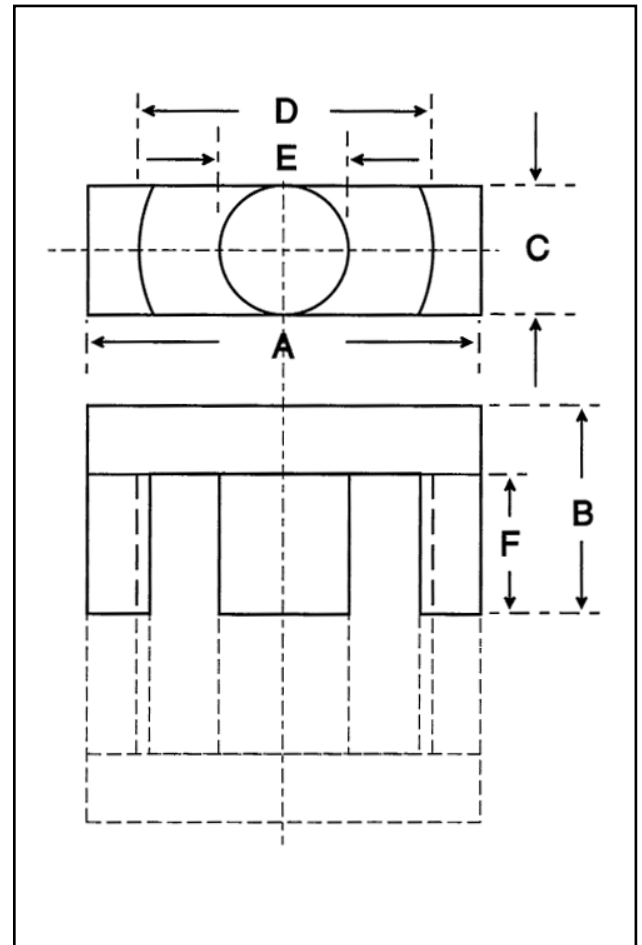


Dimensions

Symbol	Value (mm)
'A'	43.00-45.00
'B'	22.10-22.50
'C'	14.40-15.20
'D'	32.50-34.10
'E'	14.40-15.20
'F'	16.10 min

Effective Geometric Parameters

Parameter	Symbol	Value	Unit
$\Sigma(l/A)$	C_1	0.60	mm^{-1}
effective magnetic path length	l_e	103.00	mm
effective area of magnetic path	A_e	173.00	mm^2
minimum area of magnetic path	A_{\min}	172.00	mm^2
effective volume	V_e	17800	mm^3

Electrical Specification

Grade	A_L Value	Tolerance on A_L (%)	Gap Length (mm)	Eff. Permeability	Part No.
F44	≈ 130	-	2.5 ± 0.10	63	32-543-44
F44	3100	+30/-20	-	1480	32-540-44
F48	3700	+30/-20	-	1740	32-540-48

Part numbers refer to half cores