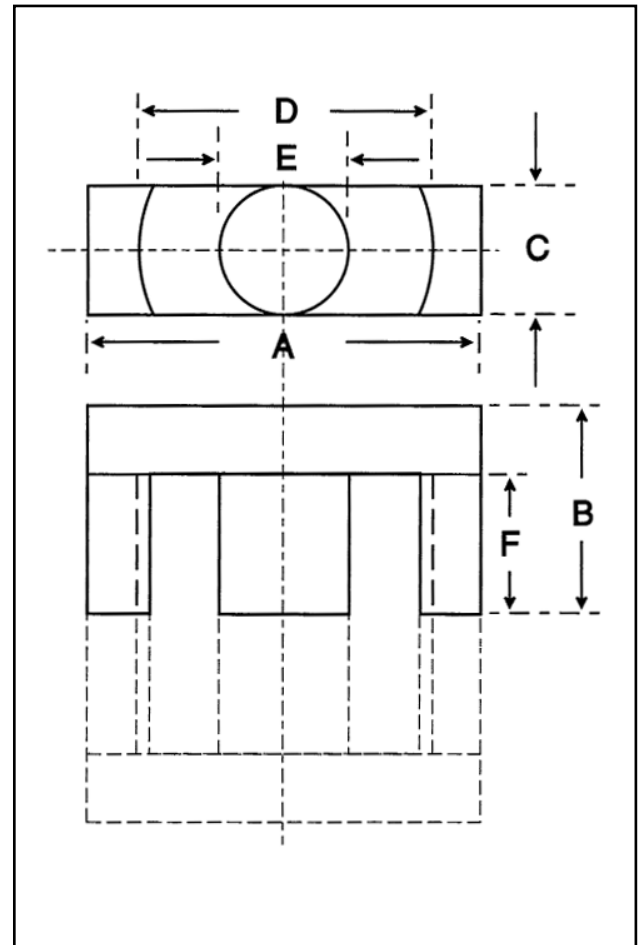


Dimensions

Symbol	Value (mm)
'A'	38.20-40.00
'B'	19.60-20.00
'C'	12.20-12.80
'D'	29.30-30.90
'E'	12.20-12.80
'F'	14.20 min



Effective Geometric Parameters

Parameter	Symbol	Value	Unit
$\Sigma(l/A)$	C_1	0.74	mm^{-1}
effective magnetic path length	l_e	92.20	mm
effective area of magnetic path	A_e	125.00	mm^2
minimum area of magnetic path	A_{min}	123.00	mm^2
effective volume	V_e	11500	mm^3

Electrical Specification

Grade	A_L Value	Tolerance on A_L (%)	Gap Length (mm)	Eff. Permeability	Part No.
F44	≈ 350	-	0.5 ± 0.03	205	32-528-44
F44	≈ 720	-	0.2 ± 0.03	425	32-527-44
F44	≈ 1250	-	0.1 ± 0.03	735	32-526-44
F44	2470	+30/-20	-	1455	32-520-44
F48	2800	+30/-20	-	1650	32-520-48

Part numbers refer to half cores

