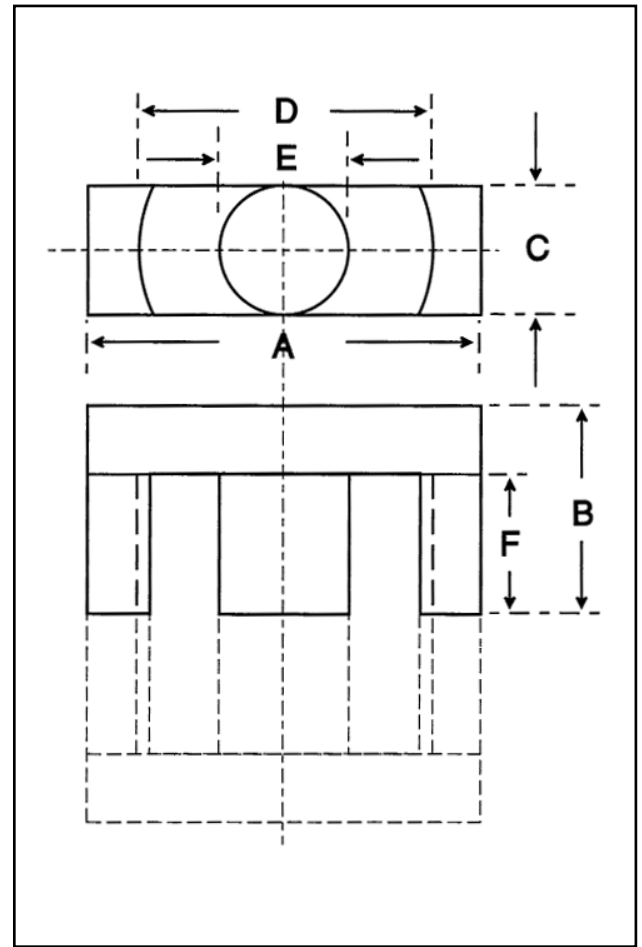


Dimensions

Symbol	Value (mm)
'A'	33.40-35.00
'B'	17.10-17.50
'C'	10.50-11.10
'D'	25.60-27.00
'E'	10.50-11.10
'F'	11.80 min

Effective Geometric Parameters

Parameter	Symbol	Value	Unit
$\Sigma(l/A)$	C_1	0.81	mm^{-1}
effective magnetic path length	l_e	78.60	mm
effective area of magnetic path	A_e	97.10	mm^2
minimum area of magnetic path	A_{\min}	91.60	mm^2
effective volume	V_e	7640	mm^3

Electrical Specification

Grade	A_L Value	Tolerance on A_L (%)	Gap Length (mm)	Eff. Permeability	Part No.
F44	≈ 160	-	1.0 ± 0.05	100	32-509-44
F44	≈ 275	-	0.5 ± 0.03	175	32-508-44
F44	≈ 1000	-	0.1 ± 0.03	645	32-506-44
F44	2250	+30/-20	-	1450	32-500-44
F48	2710	+30/-20	-	1740	32-500-48

Part numbers refer to half cores.