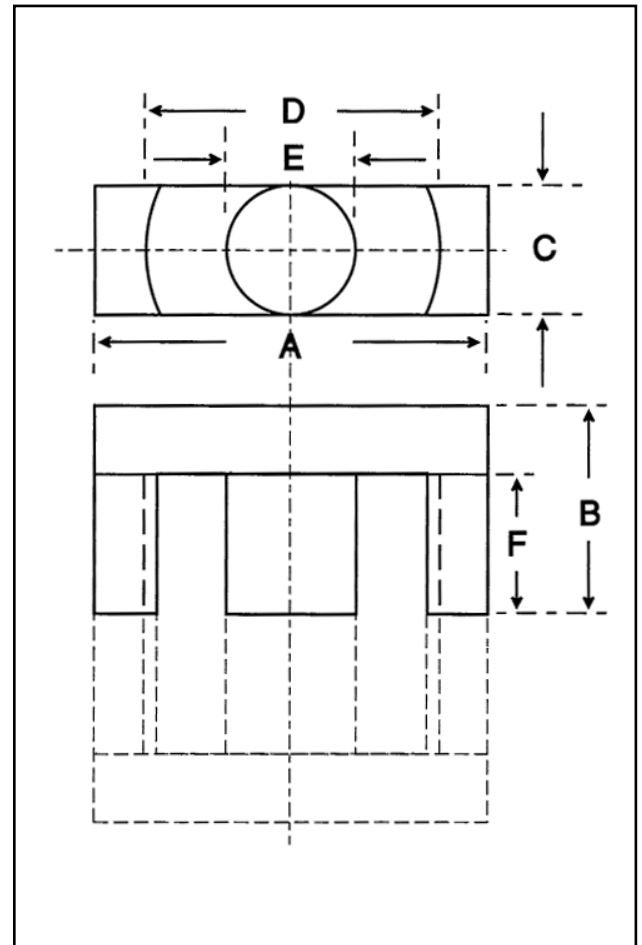


Dimensions

Symbol	Value (mm)
'A'	29.00-30.60
'B'	15.60-16.00
'C'	9.20-9.80
'D'	22.00-23.40
'E'	9.20-9.80
'F'	10.70-11.30

Effective Geometric Parameters

Parameter	Symbol	Value	Unit
$\Sigma(l/A)$	$C_1$	0.93	$\text{mm}^{-1}$
effective magnetic path length	$l_e$	70.40	mm
effective area of magnetic path	$A_e$	76.00	$\text{mm}^2$
minimum area of magnetic path	$A_{\min}$	70.00	$\text{mm}^2$
effective volume	$V_e$	5376	$\text{mm}^3$

Electrical Specification

Grade	$A_L$ Value	Tolerance on $A_L$ (%)	Gap Length (mm)	Eff. Permeability	Part No.
F44	$\approx 125$	-	$1.0 \pm 0.05$	92	32-589-44
F48	$\approx 125$	-	$1.0 \pm 0.05$	92	32-589-48
F44	$\approx 220$	-	$0.5 \pm 0.03$	160	32-588-44
F44	$\approx 460$	-	$0.2 \pm 0.03$	340	32-587-44
F47	1800	+30/-20	-	1332	32-580-47
F44	1950	+30/-20	-	1443	32-580-44
F48	2250	+30/-20	-	1670	32-580-48

Part numbers refer to half cores.