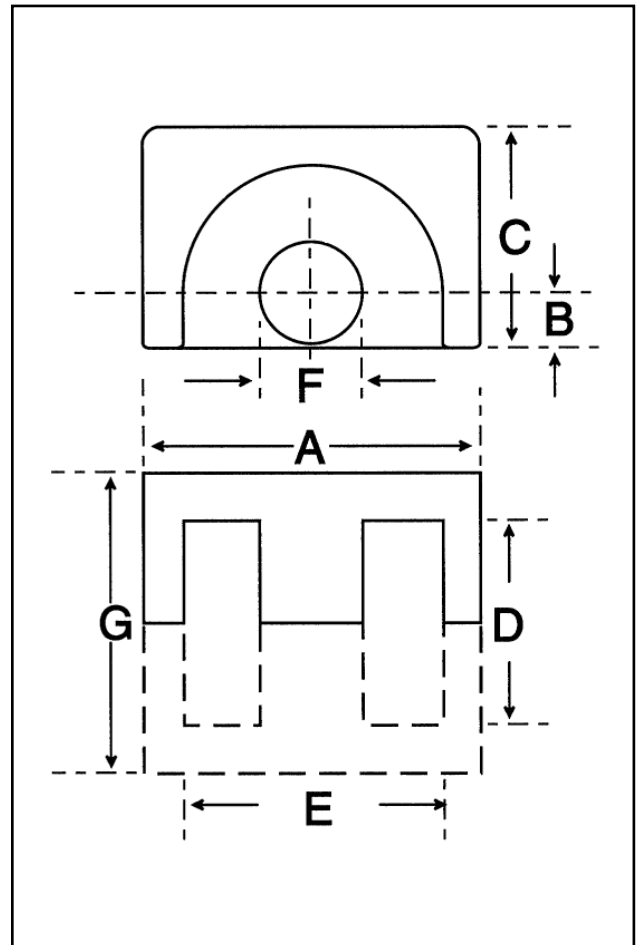


Dimensions

Symbol	Value (mm)
'A'	23.50-24.50
'B'	4.30-4.70
'C'	14.60-15.30
'D'	14.00-14.60
'E'	16.10-16.90
'F'	8.50-9.00
'G'	21.20-21.60

Effective Geometric Parameters

Parameter	Symbol	Value	Unit
$\Sigma(l/A)$	$C_1$	0.51	$\text{mm}^{-1}$
effective magnetic path length	$l_e$	40.00	mm
effective area of magnetic path	$A_e$	78.00	$\text{mm}^2$
minimum area of magnetic path	$A_{\text{min}}$	60.00	$\text{mm}^2$
effective volume	$V_e$	3120	$\text{mm}^3$



Electrical Specification

Grade	$A_L$ Value	Tolerance on $A_L$ (%)	Gap Length (mm)	Eff. Permeability	Part No.
F48	5000	+30/-20	-	2029	32-840-48
F39	18700	+30/-20	-	7590	32-840-39

