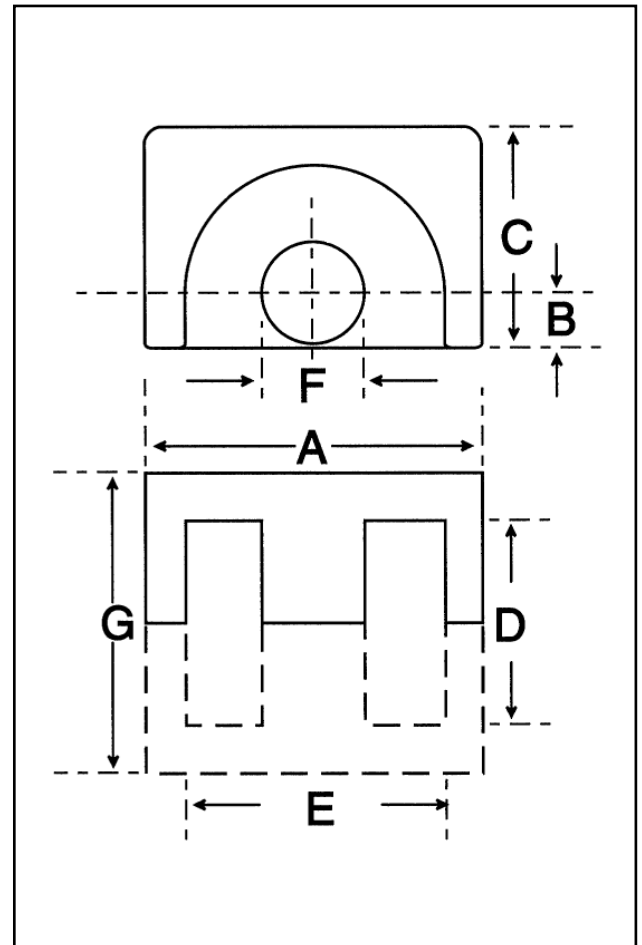


Dimensions

Symbol	Value (mm)
'A'	12.20-12.80
'B'	2.30-2.50
'C'	8.60-9.00
'D'	9.00-9.40
'E'	9.70-10.30
'F'	4.20-4.50
'G'	12.70-13.00

Effective Geometric Parameters

Parameter	Symbol	Value	Unit
$\Sigma(l/A)$	C_1	1.24	mm^{-1}
effective magnetic path length	l_e	24.20	mm
effective area of magnetic path	A_e	19.50	mm^2
minimum area of magnetic path	A_{\min}	14.90	mm^2
effective volume	V_e	472	mm^3



Electrical Specification

Grade	A_L Value	Tolerance on A_L (%)	Gap Length (mm)	Eff. Permeability	Part No.
F44	100	± 5	≈ 0.23	98	32-804-44
F44	160	± 5	≈ 0.14	157	32-808-44
F44	315	± 5	≈ 0.07	310	32-803-44
F48	630	± 8	≈ 0.04	621	32-8016-48
F44	1235	+30/-20	-	1220	32-800-44
F48	1400	+30/-20	-	1381	32-800-48
F39	7000	+40/-30	-	6905	32-800-39