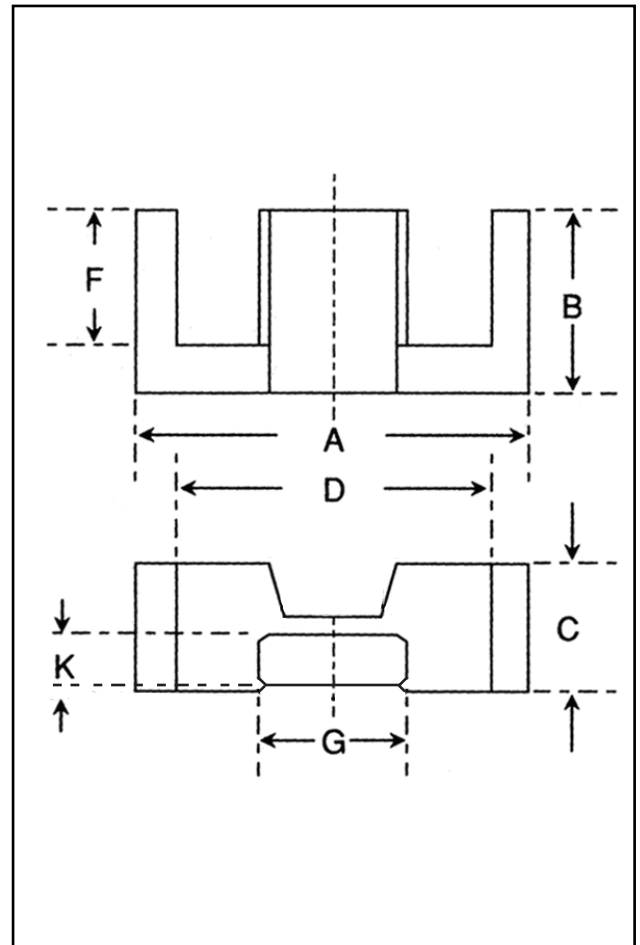


### Dimensions

Symbol	Value (mm)
'A'	29.92-30.08
'B'	14.75-15.15
'C'	9.08-9.12
'D'	22.33-22.47
'F'	11.17-11.23
'G'	14.57-14.62
'K'	9.08-9.12



### Effective Geometric Parameters

Parameter	Symbol	Value	Unit
$\Sigma(l/A)$	$C_1$	0.99	$\text{mm}^{-1}$
effective magnetic path length	$l_e$	68.00	mm
effective area of magnetic path	$A_e$	69.00	$\text{mm}^2$
minimum area of magnetic path	$A_{\min}$	69.00	$\text{mm}^2$
effective volume	$V_e$	4690	$\text{mm}^3$

### Electrical Specification

Grade	$A_L$ Value	Tolerance on $A_L$ (%)	Gap Length (mm)	Eff. Permeability	Part No.
F48	2050	+30/-20	-	1610	32-780-48