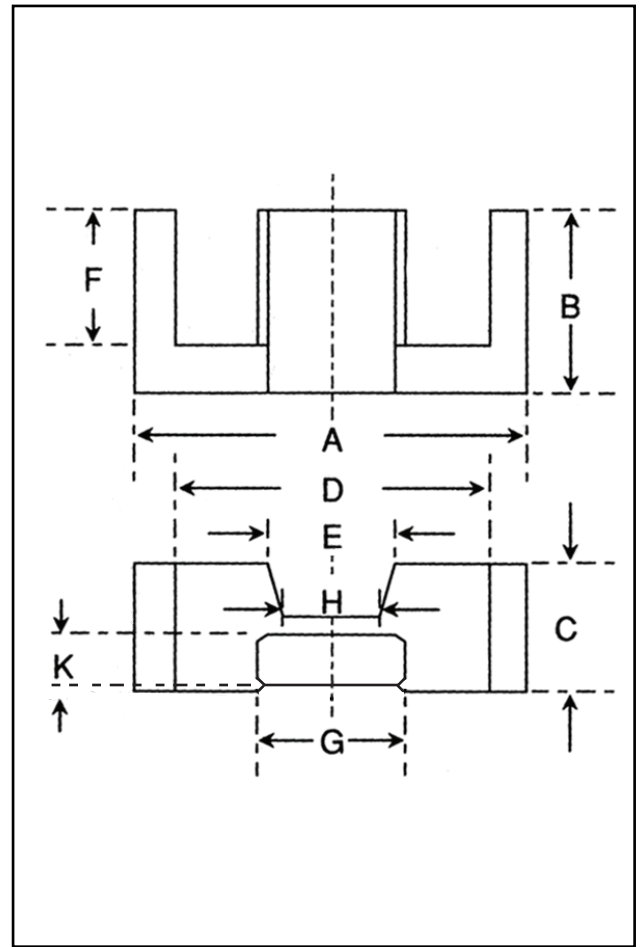


Dimensions

Symbol	Value (mm)
'A'	24.45-25.65
'B'	12.35-12.65
'C'	8.90-9.30
'D'	18.10-19.30
'E'	6.00 nom.
'F'	9.05-9.55
'G'	11.20-11.60
'H'	5.00 nom.
'K'	5.05-5.35



Effective Geometric Parameters

Parameter	Symbol	Value	Unit
$\Sigma(l/A)$	C_1	1.00	mm^{-1}
effective magnetic path length	l_e	57.00	mm
effective area of magnetic path	A_e	58.00	mm^2
minimum area of magnetic path	A_{min}	57.00	mm^2
effective volume	V_e	3300	mm^3

Electrical Specification

Grade	A_L Value	Tolerance on A_L (%)	Gap Length (mm)	Eff. Permeability	Part No.
F47	1720	+30/-20	-	1370	32-760-47
F44	1790	+30/-20	-	1425	32-760-44
F47	160	± 10	0.60	125	32-763-47
F47	250	± 10	0.30	200	32-762-47
F44	315	± 10	0.20	250	32-761-44
F47	350	± 10	0.18	279	32-7623-47

The A_L values of the gapped cores are calculated when used with an ungapped core.

