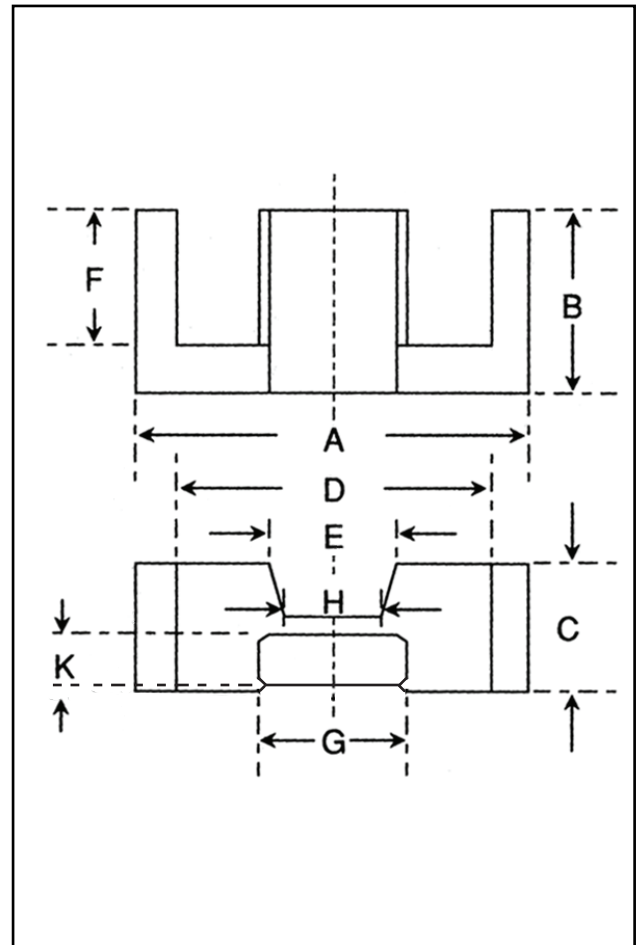


Dimensions

Symbol	Value (mm)
'A'	19.45-20.55
'B'	9.85-10.15
'C'	6.50-6.80
'D'	14.90-15.90
'E'	6.04 nom.
'F'	7.45-7.95
'G'	8.70-9.10
'H'	4.55 nom.
'K'	3.45-3.75

Effective Geometric Parameters

Parameter	Symbol	Value	Unit
$\Sigma(l/A)$	C_1	1.52	mm^{-1}
effective magnetic path length	l_e	47.00	mm
effective area of magnetic path	A_e	31.00	mm^2
minimum area of magnetic path	A_{\min}	29.00	mm^2
effective volume	V_e	1460	mm^3

Electrical Specification

Grade	A_L Value	Tolerance on A_L (%)	Gap Length (mm)	Eff. Permeability	Part No.
F47	1075	+30/-30	-	1300	32-740-47
F47	100	± 10	0.35	120	32-742-47
F47	160	± 10	0.20	195	32-741-47

The A_L values of the gapped cores are calculated when used with an ungapped core.