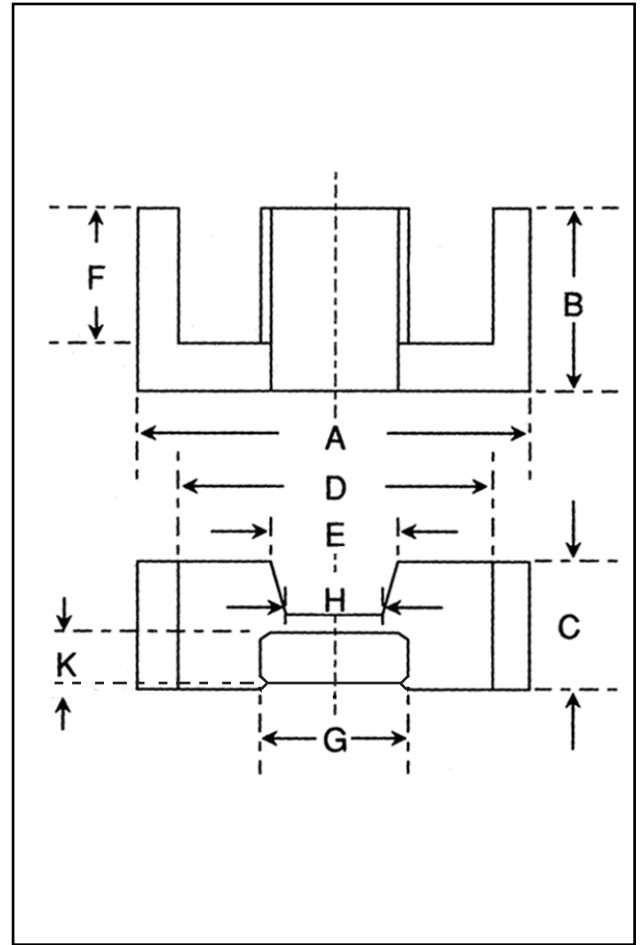


Dimensions

Symbol	Value (mm)
'A'	14.60-15.40
'B'	7.35-7.65
'C'	4.50-4.80
'D'	10.65-11.35
'E'	4.70 nom.
'F'	5.25-5.75
'G'	5.15-5.45
'H'	3.50 nom.
'K'	2.30-2.50



Effective Geometric Parameters

Parameter	Symbol	Value	Unit
$\Sigma(l/A)$	C_1	2.27	mm^{-1}
effective magnetic path length	l_e	34.00	mm
effective area of magnetic path	A_e	15.00	mm^2
minimum area of magnetic path	A_{min}	12.20	mm^2
effective volume	V_e	510	mm^3

Electrical Specification

Grade	A_L Value	Tolerance on A_L (%)	Gap Length (mm)	Eff. Permeability	Part No.
F47	650	+30/-30	-	1175	32-720-47
F48	780	+30/-20	-	2300	32-720-48
F47	100	± 10	0.17	180	32-722-47
F47	164	± 15	0.10	295	32-721-47

The A_L values of the gapped cores are calculated when used with an ungapped core.

