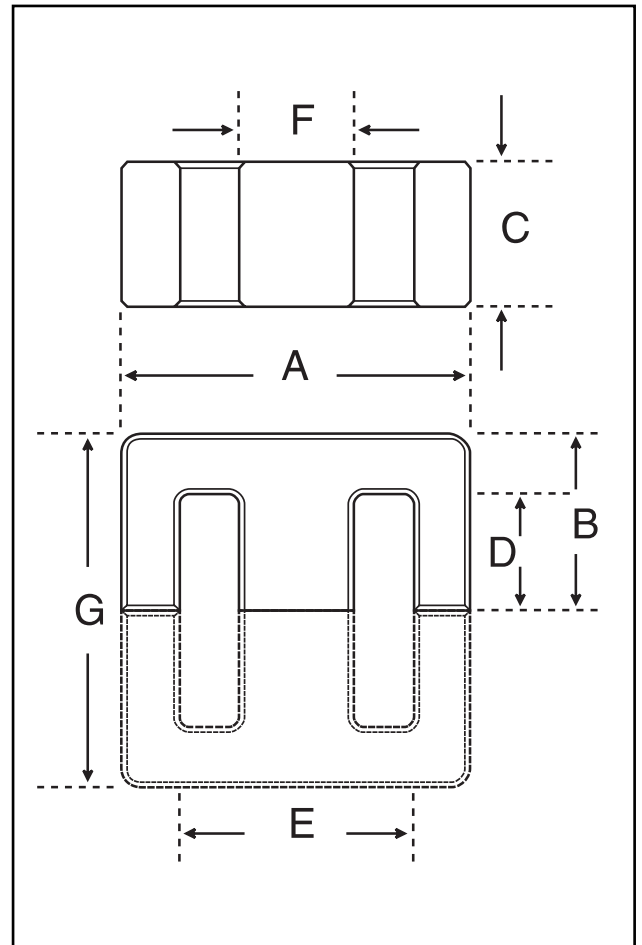


Dimensions

Symbol	Value (mm)
'A'	68.65-70.35
'B'	32.00-32.50
'C'	31.42-32.08
'D'	21.24-21.74
'E'	47.63-49.13
'F'	21.78-22.48
'G'	64.40-65.60

Effective Geometric Parameters

Parameter	Symbol	Value	Unit
$\Sigma(l/A)$	$C_1$	0.21	$\text{mm}^{-1}$
effective magnetic path length	$l_e$	146.00	mm
effective area of magnetic path	$A_e$	697.00	$\text{mm}^2$
minimum area of magnetic path	$A_{\text{min}}$	671.00	$\text{mm}^2$
effective volume	$V_e$	101922	$\text{mm}^3$



Electrical Specification

Grade	$A_L$ Value	Tolerance on $A_L$ (%)	Gap Length (mm)	Eff. Permeability	Part No.
F48	11100	+30/-20	-	2300 ±20%	32-250-48

Parameter	Symbol	Freq. kHz	Flux Density	Component
				32-250-48
Effective total core loss (W) (maximum)	$P_v$	100	100mT	7.135
		100	200mT	38.730

