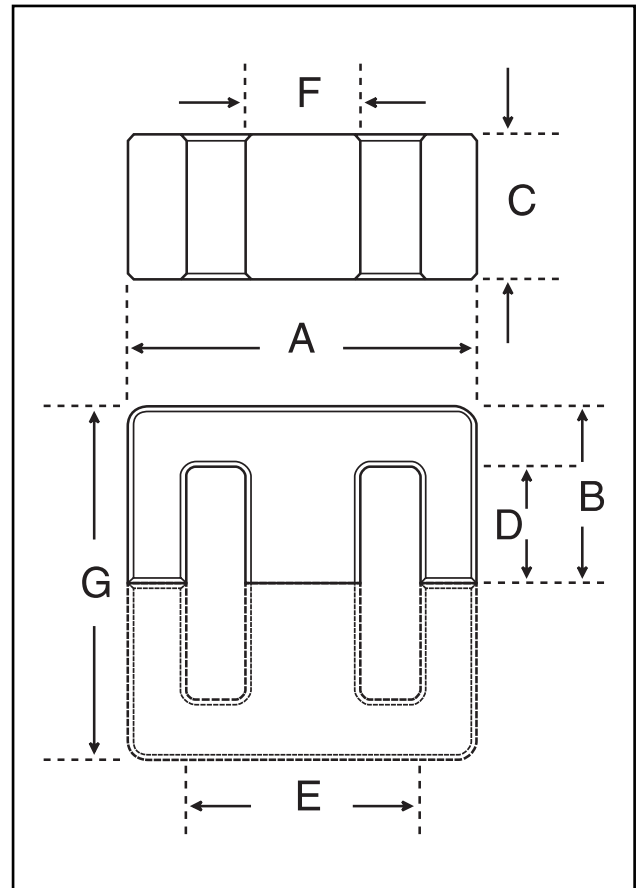


Dimensions

Symbol	Value (mm)
'A'	63.80-66.50
'B'	32.20-32.80
'C'	26.80-27.40
'D'	22.20-22.90
'E'	44.20-45.70
'F'	19.30-20.00
'G'	64.40-65.60

Effective Geometric Parameters

Parameter	Symbol	Value	Unit
$\Sigma(l/A)$	C_1	0.28	mm ⁻¹
effective magnetic path length	l_e	147.00	mm
effective area of magnetic path	A_e	532.00	mm ²
minimum area of magnetic path	A_{min}	532.00	mm ²
effective volume	V_e	78200	mm ³



Electrical Specification

Grade	A_L Value	Tolerance on A_L (%)	Gap Length (mm)	Eff. Permeability	Part No.
F47	≈200	-	5.0 ±0.10	45	32-249-47
F47	6900	+30/-20	-	1510	32-240-47
F44	7430	+30/-20	-	1625	32-240-44
F5	7750	+30/-20	-	1695	32-240-25
F48	7840	+30/-20	-	1705	32-240-48

Parameter	Symbol	Freq. kHz	Flux Density	Component			
				32-240-25	32-240-44	32-240-47	32-240-48
Effective total core loss (W) (maximum)	100°C	16	200mT	8.600	-	-	-
	25°C	25	200mT	-	-	9.384	-
	100°C	25	200mT	14.860	10.020	7.820	-
	25°C	100	100mT	-	-	8.602	-
	100°C	100	100mT	-	12.510	6.256	5.474
	100°C	100	200mT	-	-	-	29.716
	25°C	400	50mT	-	-	11.730	-
	100°C	400	50mT	-	-	11.730	-

