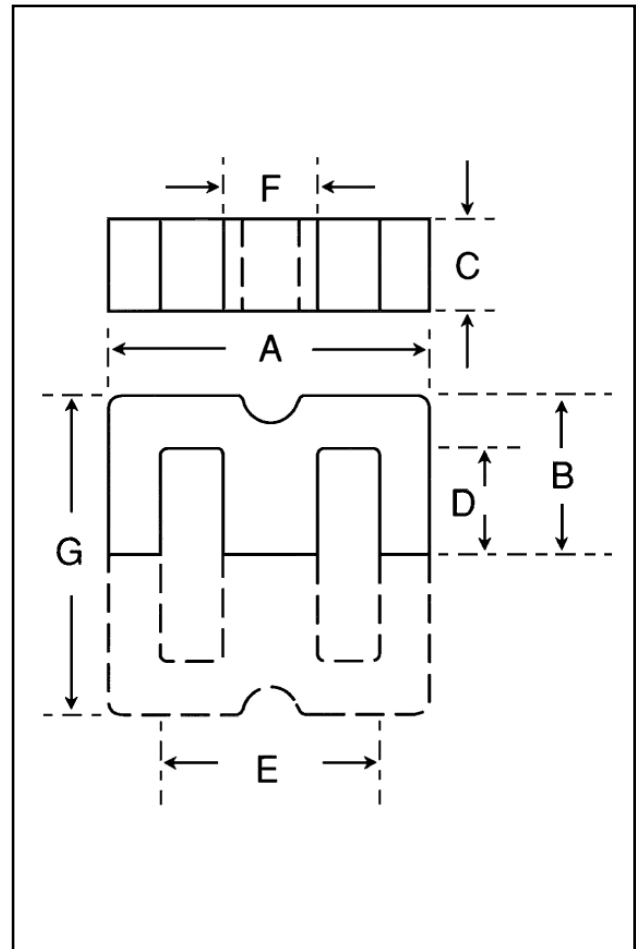


Dimensions

Symbol	Value (mm)
'A'	19.60-20.70
'B'	9.80-10.20
'C'	4.90-5.30
'D'	6.30-6.70
'E'	12.80-13.40
'F'	4.80-5.20
'G'	19.60-20.40



Effective Geometric Parameters

Parameter	Symbol	Value	Unit
$\Sigma(l/A)$	C_1	1.37	mm^{-1}
effective magnetic path length	l_e	43.00	mm
effective area of magnetic path	A_e	31.00	mm^2
minimum area of magnetic path	A_{min}	25.50	mm^2
effective volume	V_e	1330	mm^3

Electrical Specification

Grade	A_L Value	Tolerance on A_L (%)	Gap Length (mm)	Eff. Permeability	Part No.
F44	1390	+30/-20	-	1515	32-140-44
F5	1500	+30/-20	-	1635	32-140-25
F9	2570	+30/-20	-	2725	32-140-36

Parameter	Symbol	Freq. kHz	Flux Density	Component	
				32-140-25	32-140-44
Effective total core loss (W) (maximum)	P_v	16	200mT	0.146	-
		25	200mT	0.253	0.170
		100	100mT	-	0.210

